

# ACTIVESHOP<sup>®</sup>

## User Manual

OCHO TECHNIC 65W milling machine



### Importer:

ACTIVESHOP Ltd.  
8b Graniczna St., building  
DC2A 54-610 Wrocław,  
Poland  
[www.activeshop.com.pl](http://www.activeshop.com.pl)  
Rev. A/05/2024



**Professional milling machine OCHO TECHNIK 65W**, is characterized by high quality workmanship, small dimensions and modern design. Clear and easy-to-read control panel and intuitive operation, creates an excellent opportunity for both experienced and novice users to work. The ergonomic shape and light weight will make working with this head a pure pleasure. The head has a **TWIST-LOCK** type cutter lock, which allows you to replace the cutter with a single movement.

**SPECIFICATIONS:**

1. Control unit - base
2. Start/pause button
3. Changing the direction of rotator
4. Button decrease speeds
5. Button to increase the speed of rotation
6. Head stand
7. Cutter stand
8. Power socket
9. On/off switch
10. Power socket for the head
11. Cutter
12. Cutter lock - TWIST LOCK
13. Milling machine head

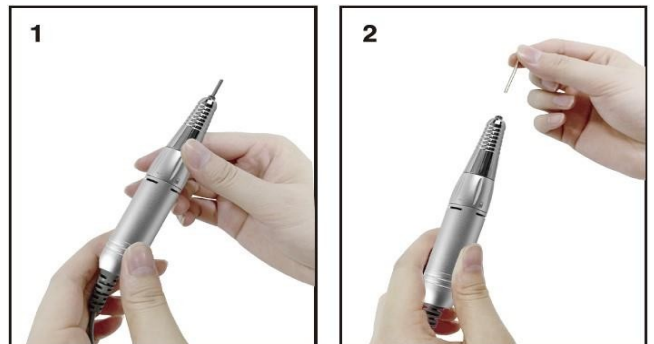


**NOTE!!!**

With prolonged use with strong pressure, at some point the milling machine stops, and after a while it shows pulsating movements. The control unit's display shows the EI message, which indicates an overload. This can cause the head to overheat, resulting in damage (not covered by the warranty).

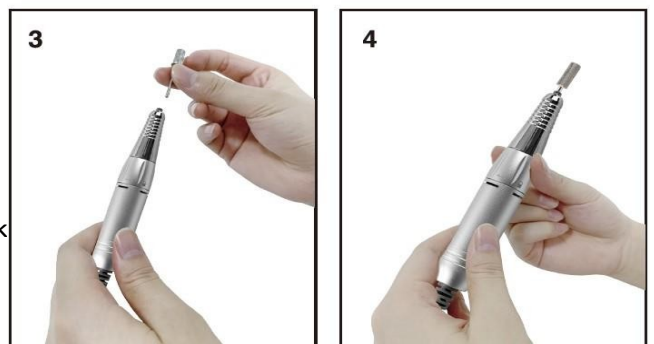
**MILLING MACHINE OPERATION:**

1. Plug the appropriate adapter into an electrical outlet to charge the router
2. Plug the head into a socket with three cores
3. Insert the appropriate cutter
4. Turn on the milling machine (No. 9 in the diagram), then use the start/pause button (No. 2 in the diagram), in turn set the speed of the milling machine (No. 4 and 5 in the diagram)
5. Change the direction of rotation - forward/backward (No. 3 on the diagram)



**HEAD SERVICE:**

1. Grab the heads in your hand (as in the diagram on the right) to open the jaws of the milling machine, turn the movable ring clockwise until you hear "click" and the indicator will be over the open padlock
2. Remove the test rod
3. Then insert the cutter you need
4. As in the first step, to close the jaws of the milling machine, turn the movable ring to the other side (counterclockwise) until you hear a "click" and the pointer is over the closed padlock.



**NOTE!!!**

Unlocking the handle during operation will damage the machine. Replacing cutters while the engine is running will damage the clutch. This damage is not subject to warranty. The cutter should be replaced in the open position of the chuck (unlocked) and the milling machine must be turned off during this time.

**NOTE!!!**

Change the cutter after turning off the milling machine with the switch (No. 9 in the diagram). Reducing the speed (No. 4 in the diagram) to the minimum does not turn off the milling machine, but only reduces its speed to the minimum (invisible to the naked eye). Changing the cutter on the switched-on milling machine at the minimum RPM can cause overheating of the head, and consequently damage (not covered by the warranty).

**Control Unit - BASE:**

	<p><b>TECHNICAL DABE:</b></p> <ul style="list-style-type: none"> <li>• power supply: 110-240 V/50-60Hz</li> <li>• ergonomic housing</li> <li>• clockwise and counterclockwise rotation</li> <li>• switch and speed control on the base</li> <li>• infinitely variable speed control</li> <li>• twist-lock handle (exchange of cutter with one movement)</li> <li>• cutter diameter 2.32 mm</li> <li>• power rating: 65W</li> <li>• weight: 695g</li> <li>• The milling machine is available in colors:             <ul style="list-style-type: none"> <li>- white</li> <li>- black</li> </ul> </li> </ul>
--	---

MODEL	DIMENSIONS IN mm		
	Width	Length	Height
<b>OCHO TECHNIC 65W</b>	160 mm	125 mm	91 mm

**NOTE!!!**

The head should be cleaned and protected from dust.  
Due to poor use and damage to the head due to dust, complaints will not be accepted

**BASIC PROBLEMS AND SOLUTIONS:**

**The milling machine does not turn on.**

- check that it is plugged in - connect the milling machine to the power supply.
- check if the milling machine is turned on - turn on the milling machine with the switch (No. 9 in the diagram)
- check if the head cable is damaged - replace the head cable (available at Activeshop)
- check if the power cable is not damaged - contact Activeshop service center

**The head is overheating.**

- check that Twist-Lock is properly closed

**NOTE!!!**

Do not soak the heads. Do not disinfect with excessive amounts of liquid. Water or disinfectant liquid getting inside the head may damage it. Before possible disinfection, remove dust from the head. It is recommended to maintain the head with agents designed for this purpose.

## SECURITY MEASURES

1. The device is a professional equipment for use in beauty parlors. Operation of the device only by qualified cosmetic personnel allows to avoid undesirable consequences during the treatment.
2. Do not disassemble the device or attempt to use it for purposes other than those indicated in this manual. Any service and repair work must be performed only by an authorized service technician (ACTIVESHOP L t d.).
3. Do not install or operate the device near liquids, wet places or with wet hands - so that no liquids get into the device.
4. Immediately remove the plug from the outlet and contact the authorized service provided by ACTIVESHOP Ltd. in the following cases:
  - a) The liquid got into the device,
  - b) The device emits a strange odor, smoke or makes strange sounds,
  - c) The power cord has been damaged,
  - d) The device was overturned or its housing was damaged.
5. Do not put any objects on the cables. Do not install the unit where someone may step on the power cord.
6. For safety purposes, unplug the power cord from the outlet each time you finish working with the device.
7. Do not insert anything into the opening of the device. If a foreign object gets into the hole, remove the cord from the outlet and contact the distributor or manufacturer.
8. Do not place the device on an unstable cart, shelf or vehicle. If dropped, the device may be damaged.
9. In order to guarantee the established useful life of the device, it is recommended to keep an interval of one minute before pressing the power button again (between switching on and off and vice versa).
10. The power supply must comply with the specifications on the nameplate. Otherwise, there is a risk of incorrect operation of the device its damage or even burning.

## NOTES:

1. In the event of damage to the power cord or other malfunctions, contact the authorized service - this will help to avoid danger.
2. This equipment may be used by children at least 8 years of age and by persons with impaired physical and mental capabilities and persons with inexperience and lack of familiarity with the equipment, if supervision or instruction is provided regarding the use of the equipment in a safe manner so that the associated risks are understood.
3. The device is not intended for play by children. Do not allow children to play with the device.
4. Do not leave the device unattended when children or persons without sufficient knowledge of the use of the device are near it.
5. This electrical appliance is not a toy. Improper use or contact with the electrical appliance may pose a health risk or lead to death, so use and store the appliance out of the reach of children.

## DISPOSAL OF THE DEVICE



Dispose of used electrical appliances, fixtures and packaging to raw material reprocessing centers in accordance with environmental protection principles. Electrical appliances should not be disposed of in household waste containers. Follow the rules for discarding this type of equipment. In order to protect the environment in accordance with Directive 2012/19/EC on waste electrical and electronic equipment, used equipment

Electrical equipment should be collected separately and then taken to collection points for waste equipment electronic and electrical.

At the end of their useful life, as well as old appliances contain full-value recyclable components, so they should be handed over for recycling. Therefore, they should be handed over to appropriate collection points, as well as they can also be handed over to ACTIVESHOP Ltd.

## **STORAGE AND TRANSPORT**

The device should be transported at a temperature in the range of (-) 20 °C to (+) 50 °C only in its original packaging. Store the device in a well-ventilated room and a relative humidity of no more than 75%. Operating temperature from (+) 10 °C to (+) 40 °C. During storage and transportation processes, the device must not be thrown or dropped, exposed to mechanical shocks or atmospheric agents.